

Rates

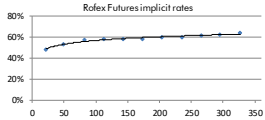
Table with 3 columns: Instrumento, TNA, and Date. Rows include Caudón 7d, Caudón 30d, BADLAR Priv. (>\$1mm), TM20 Priv. (>\$20mm), and TPM - Leliq 7D.

BCRAA3500 USD \$85,000

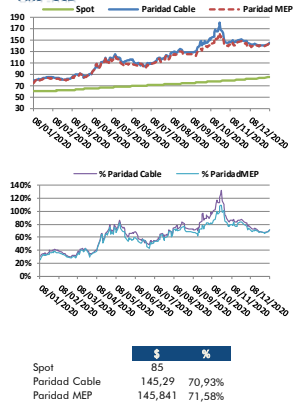
Table with 3 columns: Days, %Change, and Annualized. Rows show data for 9d, 34d, 63d, 92d, 184d, and 366d.

Rofex - ARS/USD Futures

Table with 8 columns: Futures, Maturity, Days, USD, Rates, -d1, Ch, and Op. l. Rows list various futures contracts like SPOT, DLR012021, etc.



ARS - USD



Bonds

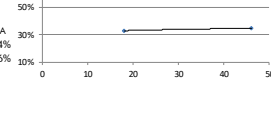
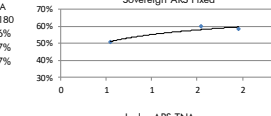
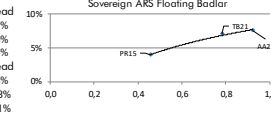
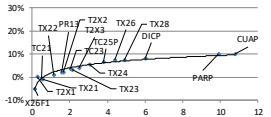
Table with 8 columns: Bond, Code, Amt Out, Coupon, Price, YTM, MD, and Maturity. Rows include Sovereign Bond Inflation Indexed, Leasr 02-21, Bancer 04-21, etc.

Table with 8 columns: Bond, Code, Amt Out, Coupon, Price, YTM, MD, and Maturity. Rows include Sovereign ARS Floating Badlar, Bancer Ago 21, Bacoan 22, etc.

Table with 8 columns: Bond, Code, Amt Out, Coupon, Price, YTM, MD, and Maturity. Rows include Sovereign ARS Fixed, Bonte \$ Oct 21, Bonte \$ Oct 23, etc.

Table with 5 columns: Ledes ARS, Amt Out, Price, TNA, Days, and Maturity. Rows include S29E1, S26F1.

Table with 5 columns: Ledads ARS, Days, Amt Out, BP +, Price, Spread, MD, Maturity, and TNA. Rows include SE291, S31M1.



Bonds

Table with 8 columns: Bond, Code, Amt Out, Coupon, Price (1), YTM, MD, and Maturity. Rows include Sovereign ext. law USD, Bonos Int. 29 NYL, etc.

Table with 8 columns: Bond, Code, Amt Out, Coupon, Price (2), YTM, MD, and Maturity. Rows include Sovereign Arg. law USD, Bonar 1% 29, etc.

Table with 8 columns: Bond, Code, Amt Out, Coupon, Price, YTM, MD, and Maturity. Rows include Sovereign Arg. law USD Linked, Bonte 11-21 - USD Linke, etc.

Table with 8 columns: Bond, Code, Amt Out, Coupon, Price, YTM, MD, and Maturity. Rows include Bs. As. 21 NYL, CABA, 21 NYL, etc.

Table with 8 columns: Bond, Code, Amt Out, Coupon, Price, YTM, MD, and Maturity. Rows include Mun. Cord 24 NYL, Chubut 26 NYL, etc.

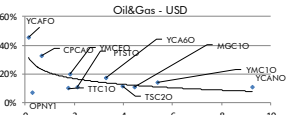
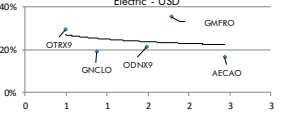
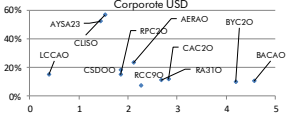
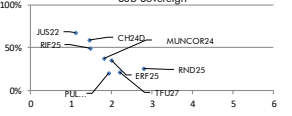
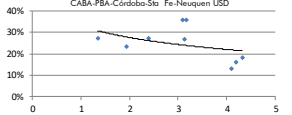
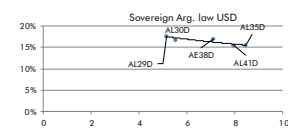
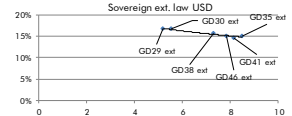
Table with 8 columns: Corporate USD, Code, Amt Out, Coupon, Price, YTM, MD, and Maturity. Rows include YPFF 2021, Telecom 2021, etc.

Table with 8 columns: Corporate USD, Code, Amt Out, Coupon, Price, YTM, MD, and Maturity. Rows include YPFF 2024, YPFF 03-2025, etc.

Table with 8 columns: Corporate USD, Code, Amt Out, Coupon, Price, YTM, MD, and Maturity. Rows include YPFF 2029, YPFF 2047, etc.

Table with 8 columns: Corporate USD, Code, Amt Out, Coupon, Price, YTM, MD, and Maturity. Rows include YPFF 2029, YPFF 2047, etc.

\*\* Dirty Price \*\* Callable Bond - Yield to Maturity



El presente documento ha sido realizado por Argenfunds S.A. con fines estrictamente informativos. No debe ser tomado como una invitación a suscribir cotapartes ni como una oferta de compra o venta de valores. El documento se ha realizado con fuentes de información consideradas confiables, pero la empresa no puede garantizar la exactitud de las mismas. Los fondos comunes de inversión están sometidos a variaciones en los precios de los activos que pueden afectar su rendimiento. Los rendimientos pasados de los fondos comunes de inversión no garantizan el desempeño futuro de los mismos. Las inversiones en cotapartes del Fondo no constituyen depósitos en Banco Macro S.A. a los fines de la Ley de Entidades Financieras ni cuentan con ninguna de las garantías que tales depósitos a la vista o a plazo puedan gozar de acuerdo con la legislación y reglamentación aplicables en materia de depósitos en entidades financieras. Asimismo, Banco Macro S.A. se encuentra impedida por normas del Banco Central de la República Argentina de asumir, tácita o expresamente, compromiso alguno en cuanto al mantenimiento, en cualquier momento, del valor del capital invertido, al rendimiento, al valor del rescate de la cuota partes o al otorgamiento de liquidez a tal fin. Gráficos de Elaboración propia. Fuentes Rofex CAFCA y Bolsar